

4th

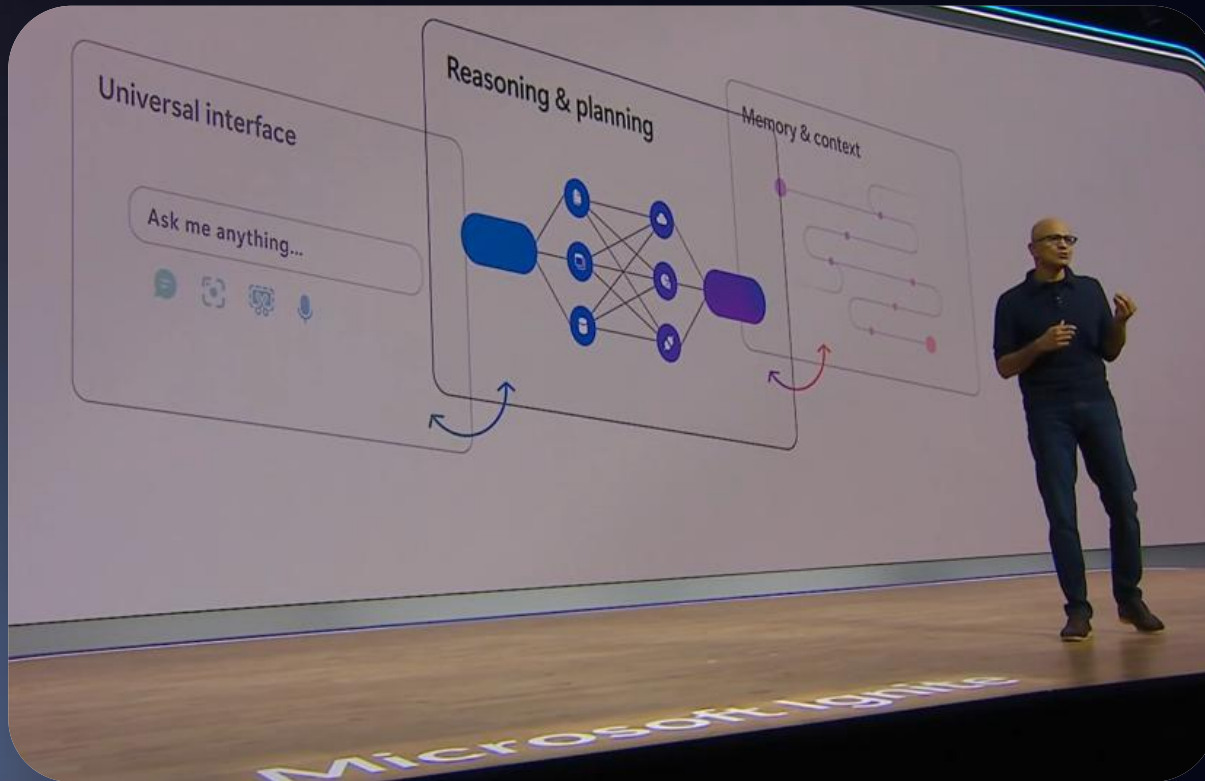
Yealink 4th-gen MVC Series

Any Space Any Discussion

AI-Powered Microsoft Teams Rooms
Systems on Windows



AI Has Come A Long Way



70%

of people are already using AI at work.

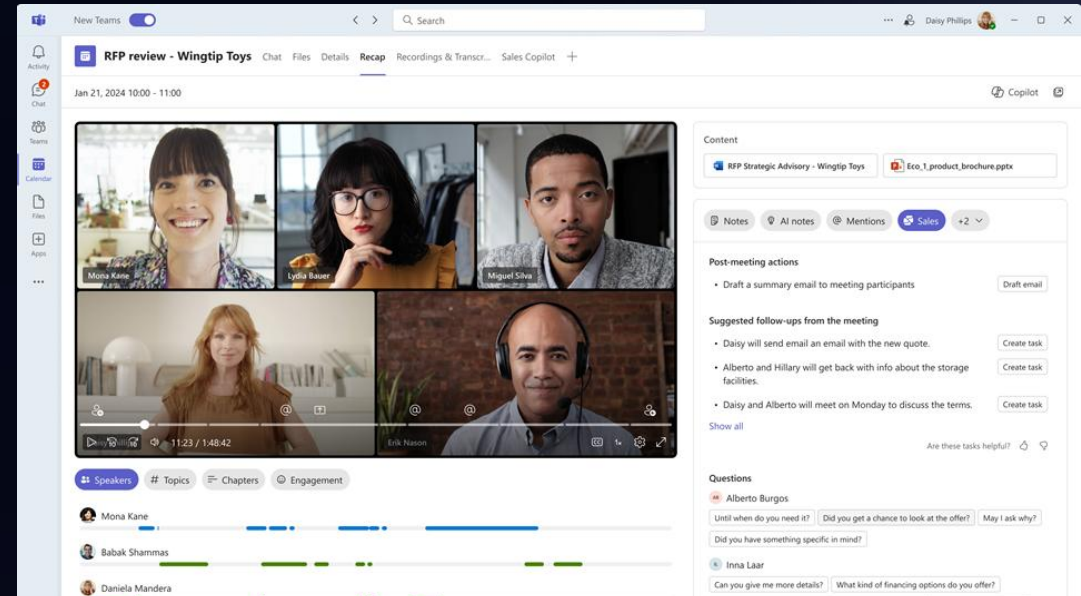
The heaviest Teams users (the top 5%) summarized
8 hours of meetings using Copilot
in one month, the equivalent of an entire workday.

*Source from: 2024 Work Trend Index Annual Report, Microsoft and LinkedIn

AI for Smarter Meetings



Multi-Stream Intelliframe



Copilot Agent / Facilitator

Intelligent features changing the way of hybrid working.

**Yet is current AI truly ready
for the realities of hybrid work?**

**In a perfect
meeting room,
Everyone is
equally present.**



However, We still require more Immersion and Interactivity



Side view or blocked



Distant and disconnected

Need More Eyes to See Better



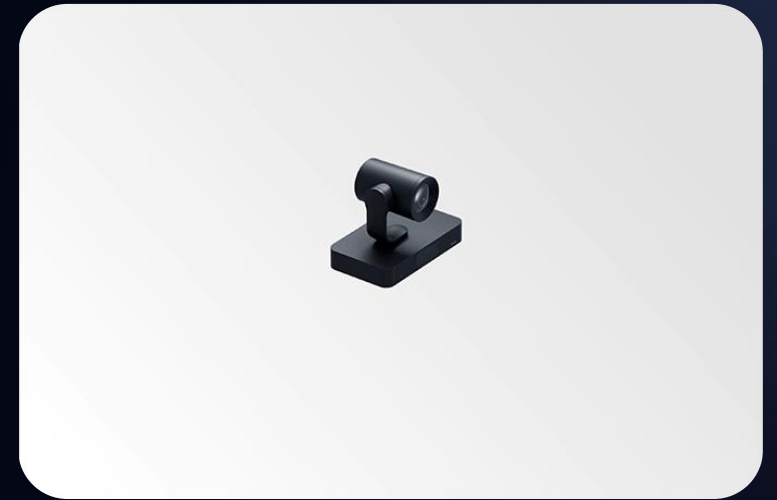
Front of the Room View

Dual-lens and triple-lens video bar for more balanced and crystal-clear view in small to medium rooms.



Center View

The triple-eye table camera, combined with the front-of-the-room camera, ensures every participant is always seen from the front.



Multi-cam Best View

Triple- or quad-eye PTZ camera systems work together to cover large rooms, ensuring everyone is always seen clearly from the best possible angle.

Multi-lens & Multi-came Coverage for Better Immersion

Need Future-ready AI Power for Intelligent Cameras

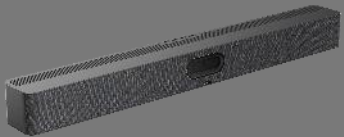
SmartVision 80



MTower



A50



50%

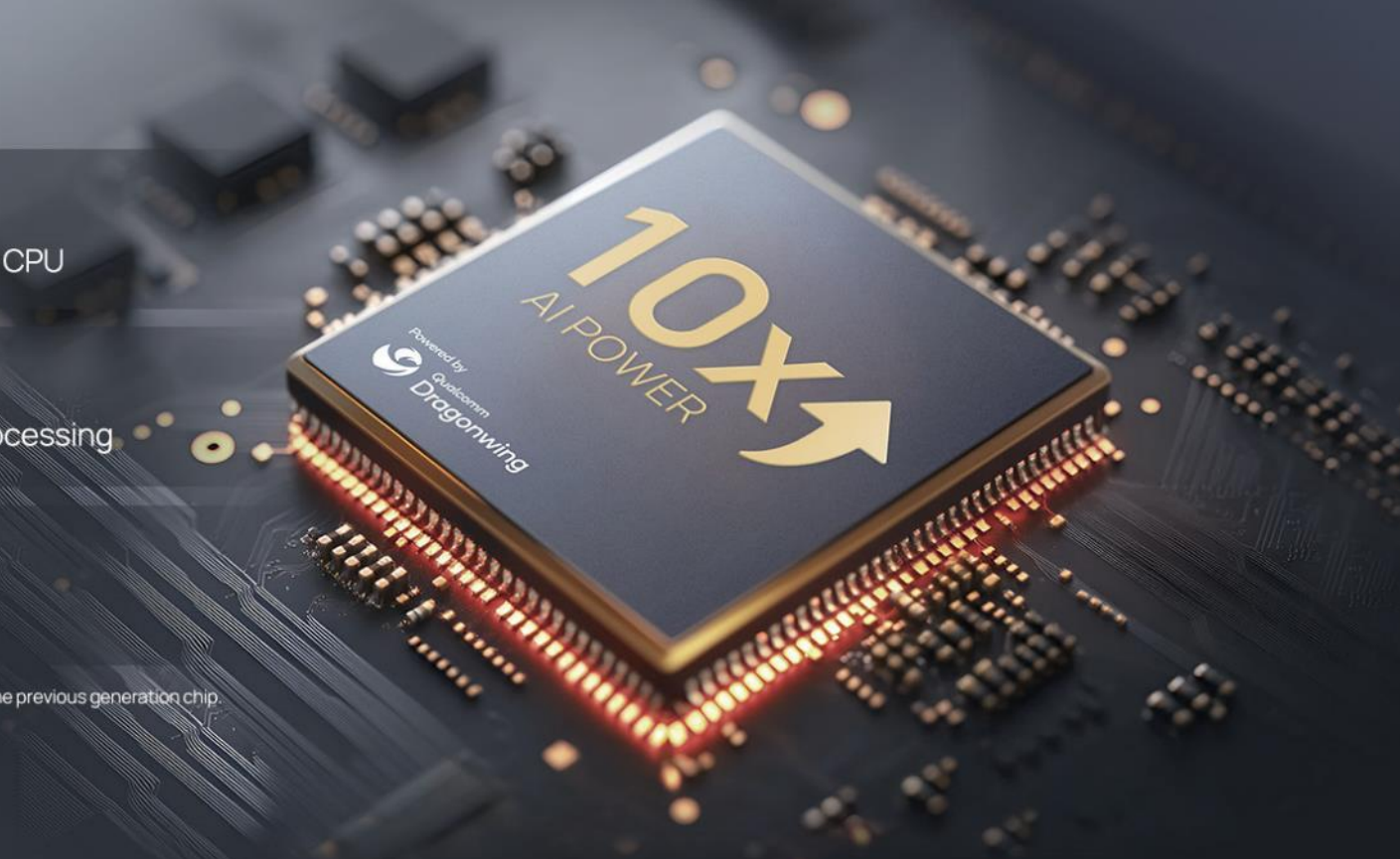
more performance in CPU

Over **10** times
performance in AI processing

48 TOPS
AI computing power

*Data based on comparisons with the previous generation chip.

Hear from Qualcomm



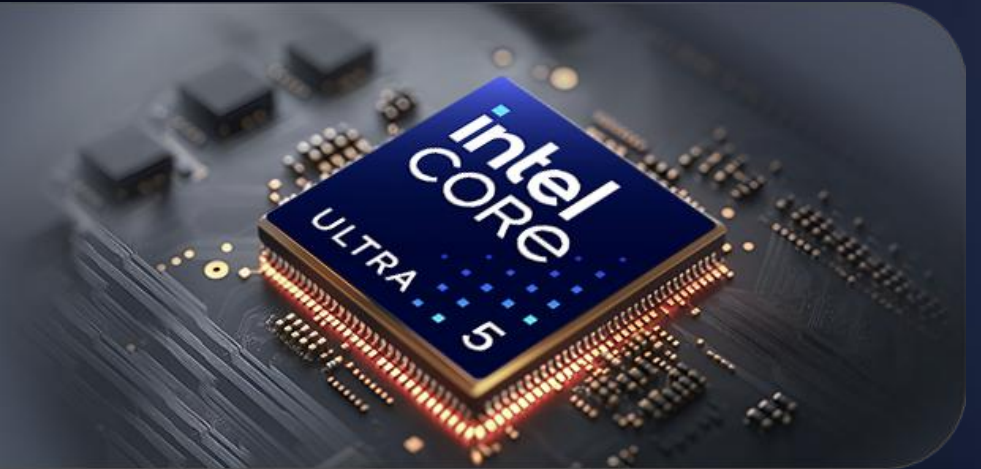
Need Future-ready AI Power for AI PC

MCore 4



INTEL
CORE

ULTRA 5



**Future-Ready
AI Power**

Intel Ultra 5 Inside
Integrated NPU
34 TOPS AI Processing

**Purpose-Built for
Smarter Meetings**

Built-in EDID module
CEC support
IP connection to the
touch console

**Secure by
Design**

AVLAN & Internet
Separation

[Hear from Intel](#)

THE NEW MVC SERIES

MCore Kit

NEW



MCore 4 kit

Small Room



MVC S40

ProAV room

NEW



MVC S98

Medium - Large & Large Room

NEW



MVC S50

NEW



MVC S80

Boardroom



MVC S90

ProAudio Accessories

NEW



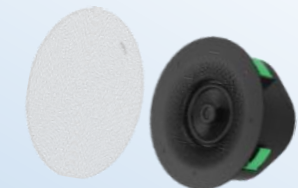
CM50



MSpeaker Pro



AP08 DSP



CS10-D

Upgrade Highlight: MCore 4



New design in deployment & Cable management



Intel Core Ultra 5,
Built-in NPU. **34Tops**
Computing Power



Remote Management &
Re-image device
on **Yealink YMCS**



Enterprise-level Security
AVLAN & Internet separation

Built-in EDID module,
CEC support

New-Gen AI PC for Video Conferencing

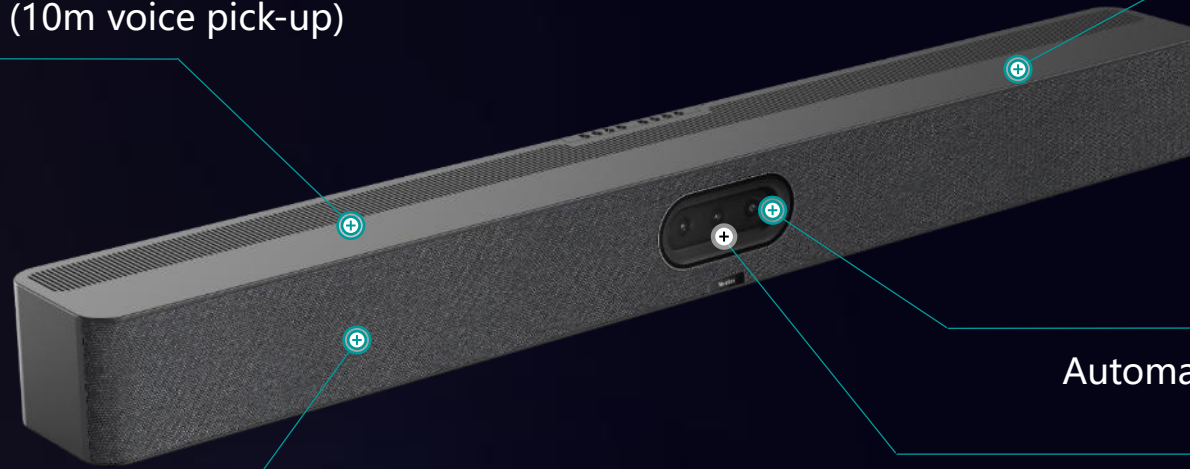
Upgrade Highlight: A50 (USB Mode)



Qualcomm QCS8550 inside
48Tops Computing Power

16 MEMS Mic Array (10m voice pick-up)

Android 13



Automatic Privacy Shutter

Triple 50MP Camera System

4x Stereo Speakers

All-in-one Intelligent Camera for Small to Medium Rooms

Upgrade Highlight: A50 (USB Mode)

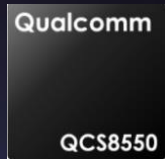


Features Highlight

- IntelliFocus, tracking 4 speakers with room view.
- Triple 50MP camera system ensures 6-8m optimal coverage.
- Teams Multi-Stream IntelliFrame
- 10m voice pick-up range



Upgrade Highlight: SmartVision 80



Qualcomm QCS8550 inside
48Tops computing power

20x optical zoom

NDI | HX3, Dante
compatible

Built-in 4-mic Array

Triple camera system
2x tele-photo lens + 1x
wide-angle lens

Certified for
Microsoft Teams

Industry-Leading 4-lens PTZ Camera

Upgrade Highlight: SmartVision 80



Features Highlight

- IntelliFocus on 3+1 camera system, tracking 4 speakers with room view.
- 20x optical lens ensures the presenter tracking with lossless image up to 20m.
- Customizable priority area for better tracking result.



Upgrade Highlight: S98 Triple-Camera Best View



Powered by MVC S98



Training room



Divisible room



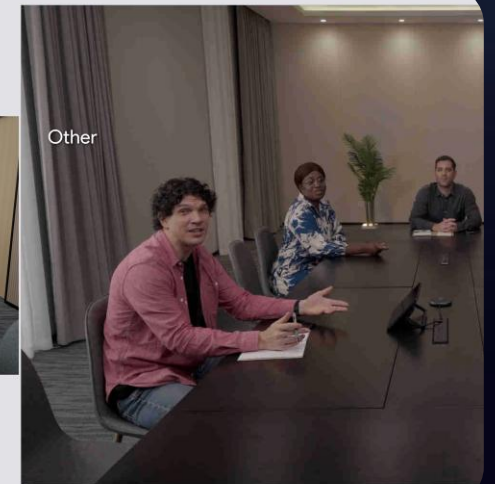
Easier Deployment • Faster Tracking • Better Compatibility

Upgrade Highlight: S90 Dual-Camera Auto-Switch



Features Highlight

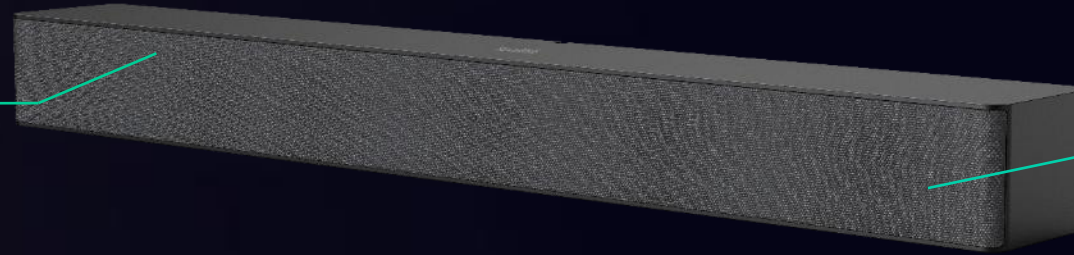
- With AI-driven Director, it automatically tracks the speaker, switches views, and syncs cameras to keep the focus on right participants.
- No extra audio accessories needed.



Upgrade Highlight: MSpeaker Pro

New Member in Flexible Audio Solutions

Built-in 4 Speakers
Maximum sound
pressure level: 95dB



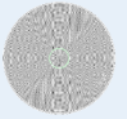
Supports PoE/PoE+
power supply and IP
deployment



CM50



CM20



VCM36-W
Package



MSpeaker Pro



VCM35



CS10/CS10-D



Microsoft Teams Multi-Stream Experience

Multi-Stream IntelliFrame & Copilot Experience for All Room Spaces



MVC S40
Small to Medium



MVC S50
Medium to Large



MVC S90
Large & ProAV Room

Yealink

Multi-Stream
IntelliFrame



MTR Pro License required

Copilot
Generates
insights

Captures
and knows
**WHO SAID
WHAT**



Copilot License required

Intelligent in Every Collaboration Space



Small Signature room



Small rooms



Medium rooms



Large rooms



Boardrooms



Signature rooms



Divisible rooms



Training rooms

Small to Medium Rooms



MVC S40

- Dual 48MP camera system, 120FoV
- AI-powered view, IntelliFocus, Video Fence
- Multi-stream IntelliFrame
- Built-in 8 MEMS mics, 6m voice pickup
- AI-Enhanced Noise Cancellation



SmartVision 40
Intelligent video bar



MCore 4



MTouch Plus
touch console



RoomSensor

Medium to Large Rooms



MVC S50

- Triple 50MP camera system with AI features
- Qualcomm 8550 processor with 48TOPS AI performance
- 16 MEMS mic arrays and 4x built-in speakers with AI-Enhanced audio system



A50 (USB Mode)
Intelligent video bar



MCore 4



MTouch Plus
touch console



RoomSensor

Large Rooms



MVC S90

- Dual Cam Intelligent Auto-Switch
- 12x optical lens for lossless tracking
- Precise speaker tracking without additional audio device required.



2* UVC86
Camera



MTouch Plus
touch console



MCore 4



AV-Hub



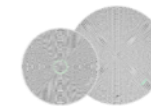
MVC-BYOD-
Extender



RoomSensor



CM50/CM20/CS10/VCM35/VCM36 / MSpeaker Pro
(Flexible options)



ProAV Rooms

Training room / Divisible room / Multi-purpose room



MVC S98

- Multi-camera with Virtual Director
- Different angles setup with IntelliFocus for best view experience.
- Presenter Tracking in multiple modes



N* SmartVision 80
Camera



MTouch Plus
touch console



MCore 4



AV-Hub



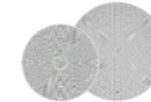
MVC-BYOD-
Extender



RoomSensor



CM50/CM20/CS10/VCM35/VCM36 / MSpeaker Pro
(Flexible options)



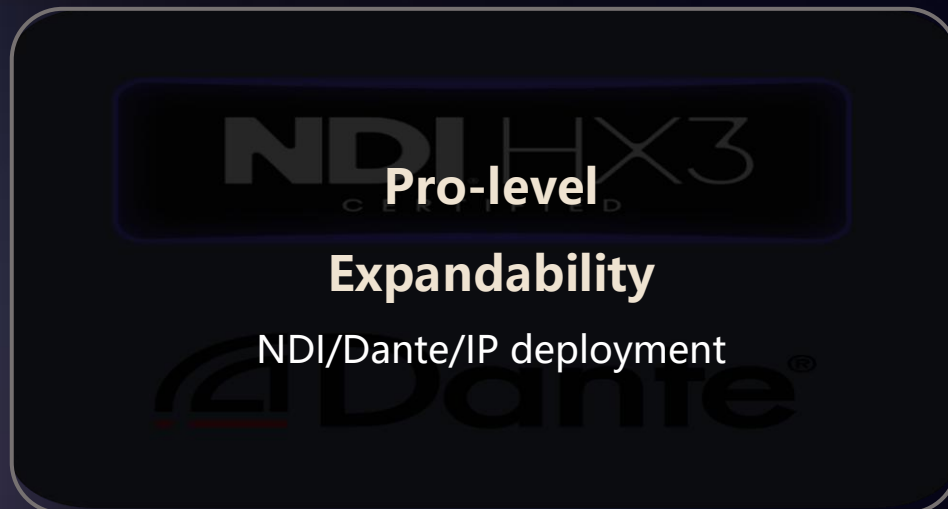
2025 MTR Upgrade

An image of an Intel Ultra processor chip, showing the 'Intel Core Ultra' branding and various components on the silicon die.

**Industry-leading AI
Computing Power**
Intel Ultra / QCS8550

An image showing a multi-lens camera module and a multi-camera solution, including a camera tower and a camera unit.

**Upgraded Multi-lens &
Multi-cam Solutions**
A50/SV80/S98/MTower

An image featuring the NDI HX3 logo and the Dante logo, representing audio and video streaming technologies.

**Pro-level
Expandability**
NDI/Dante/IP deployment

An image showing a meeting room setup with a large screen, a camera, and a microphone, illustrating a one-stop solution for meeting spaces.

**One-stop Solution for
Full Scenarios**
Standard/Complex meeting space

THANK YOU